

M23 Signal Connector Accessories

■ Type

■ Part number

■ Accessories

Assembly tool for M23 signal connectors
For connectors with female thread

M23-TOOL-1



■ Type

■ Part number

■ Accessories

Assembly tool for M23 signal connectors
For connectors with male thread

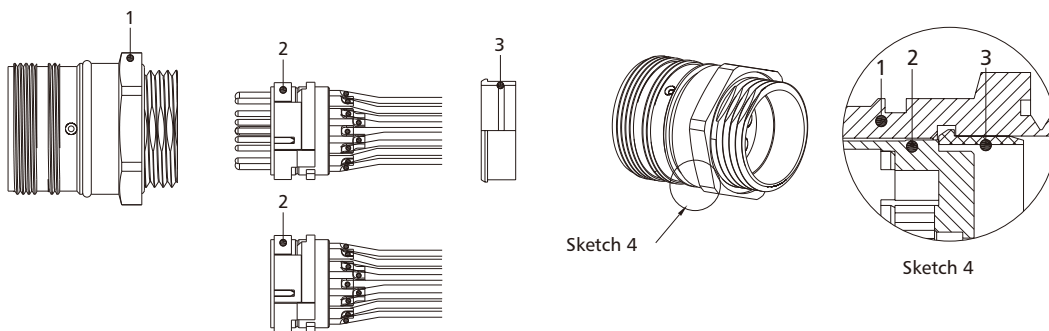
M23-TOOL-2



M23 Signal Solder Panel Type Assembly Instruction

Assembly Instructions:

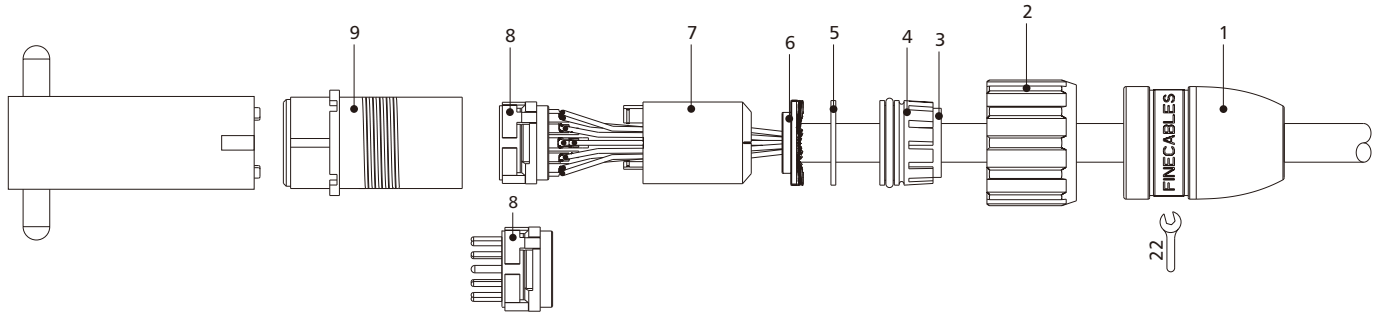
- a, Solder the wires to contact cup.
- b, Guide the insert 2 into the screw 1.
- c, Push the Fastening 3 into the screw 1 to reach snap-fit locking as per sketch 4.





M23 Signal Connectors/Assembly Instructions

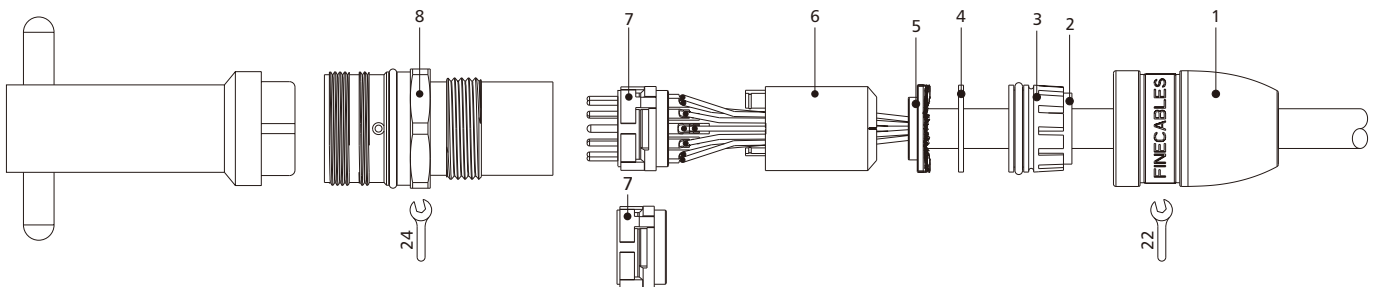
■ Straight Connector, Female Thread, Solder type



Assembly instructions:

- Push the adapter 1 nut 2 and the sealing element 4 with gasket 3 and metallic gasket 5 over the cable sheath;
- Strip the external sheath to a length of 24mm;
- Push back the shielding screen such that it stands out at 90 ° and cut it flush with the outer diameter of the shield disc 6;
- Strip the wires to a length of 2.5mm, twist and tin plate;
- Solder the wires to the contacts;
- Insert the spacer sleeve 7;
- Guide the insert 8 and spacer sleeve 7 into the insert sleeve 9;
- Press in the cable with the shield and sealing unit;
- Screw the adapter 1 as tight as possible;

■ Straight Connector, Male Thread, Solder type

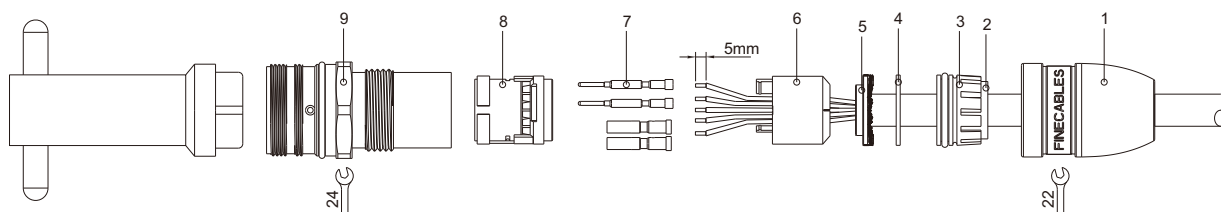


Assembly instructions:

- Push the adapter 1 and the sealing element 3 with gasket 2 and metallic gasket 4 over the cable sheath;
- Strip the external sheath to a length of 24mm;
- Push back the shielding screen such that it stands out at 90° and cut it flush with the outer diameter of the shield disc 5;
- Strip the wires to a length of 2.5mm, twist and tin plate;
- Solder the wires to the contacts;
- Insert the spacer sleeve 6;
- Guide the insert 7 and spacer sleeve 6 into the insert sleeve 8;
- Press in the cable with the shield and sealing unit;
- Screw the adapter 1 as tight as possible;

M23 Signal Connectors/Assembly Instructions

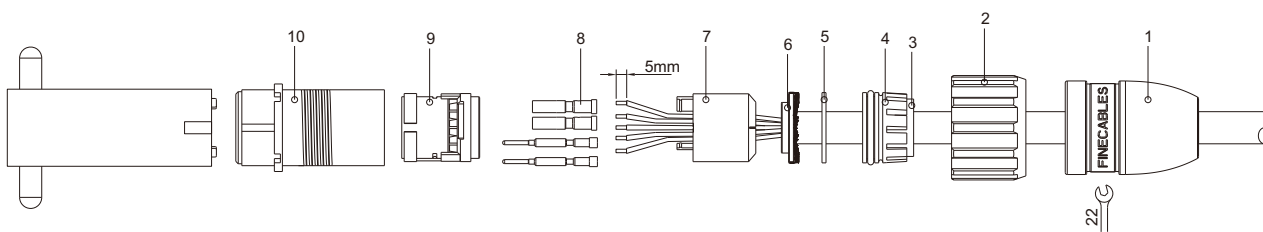
■ Straight Connector, Male Thread, Crimp type



Assembly instructions:

- Push the adapter 1 and the sealing element 3 with gasket 2 and metallic gasket 4 over the cable sheath;
- Strip the external sheath to a length of 20mm;
- Push back the shielding screen such that it stands out at 90° and cut it flush with the outer diameter of the shield disc 5;
- Strip the wires to a length of 5.0mm;
- Crimp the wires to the contacts 7;
- Insert the spacer sleeve 6;
- Guide the insert 8 and spacer sleeve 6 into the insert sleeve 9;
- Press in the cable with the shield and sealing unit;
- Screw the adapter 1 as tight as possible;

■ Straight Connector, Female Thread, Crimp type

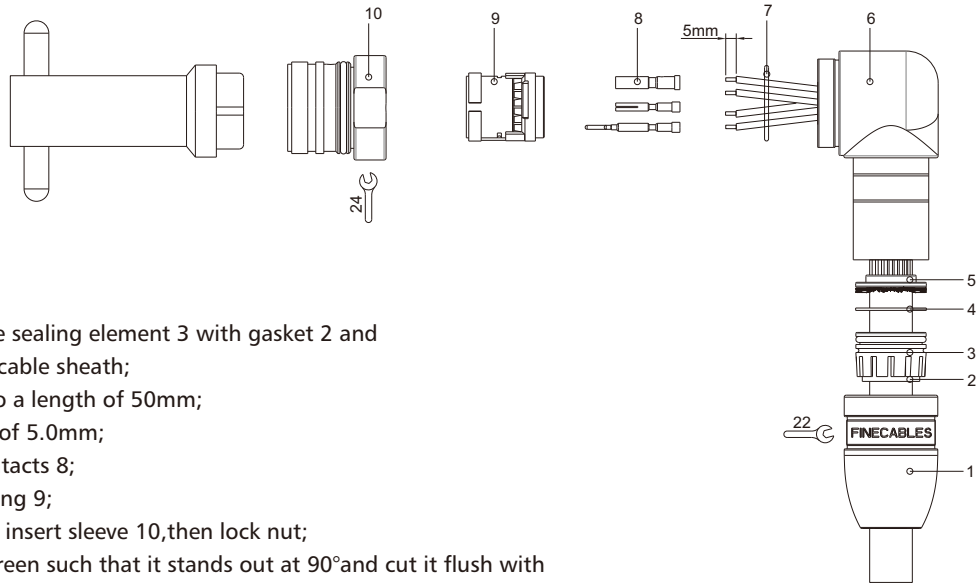


Assembly instructions:

- Push the adapter 1 nut 2 and the sealing element 4 with gasket 3 and metallic gasket 5 over the cable sheath;
- Strip the external sheath to a length of 20mm;
- Push back the shielding screen such that it stands out at 90° and cut it flush with the outer diameter of the shield disc 6;
- Strip the wires to a length of 5.0mm;
- Crimp the wires to the contacts 8;
- Insert the spacer sleeve 7;
- Guide the insert 9 and spacer sleeve 7 into the insert sleeve 10;
- Press in the cable with the shield and sealing unit;
- Screw the adapter 1 as tight as possible;

M23 Signal Connectors/Assembly Instructions

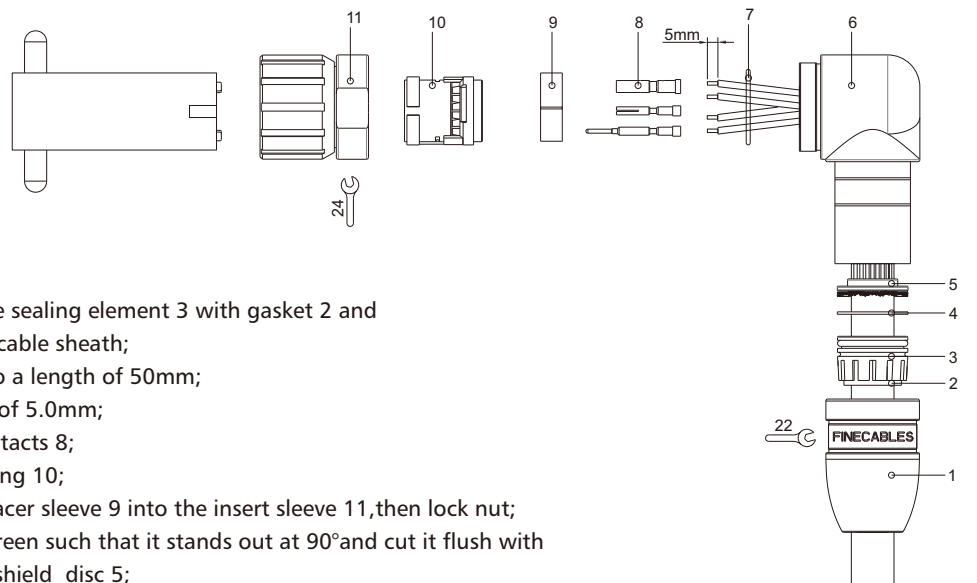
■ Right Angle Connector, Male Thread, Crimp type



Assembly instructions:

- Push the adapter 1 and the sealing element 3 with gasket 2 and metallic gasket 4 over the cable sheath;
- Strip the external sheath to a length of 50mm;
- Strip the wires to a length of 5.0mm;
- Crimp the wires to the contacts 8;
- Contacts 8 insert the housing 9;
- Guide the insert 9 into the insert sleeve 10, then lock nut;
- Push back the shielding screen such that it stands out at 90° and cut it flush with the outer diameter of the shield disc 5;
- Press in the cable with the shield and sealing unit;
- Screw the adapter 1 as tight as possible;

■ Right Angle Connector, Female Thread, Crimp type

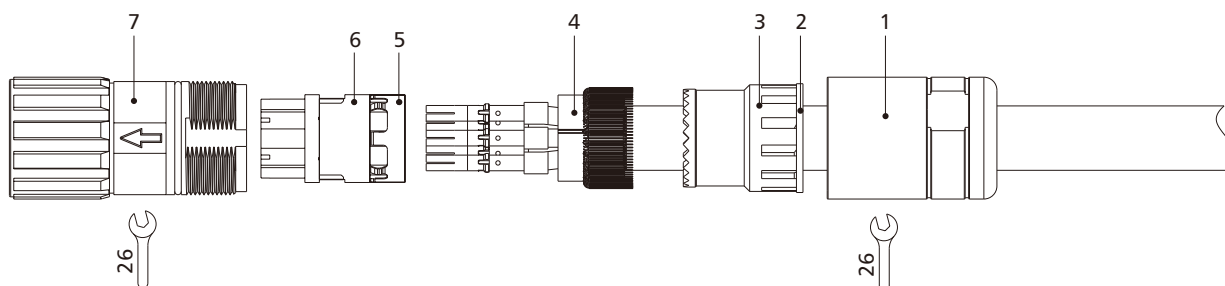


Assembly instructions:

- Push the adapter 1 and the sealing element 3 with gasket 2 and metallic gasket 4 over the cable sheath;
- Strip the external sheath to a length of 50mm;
- Strip the wires to a length of 5.0mm;
- Crimp the wires to the contacts 8;
- Contacts 8 insert the housing 9;
- Guide the insert 10 and spacer sleeve 9 into the insert sleeve 11, then lock nut;
- Push back the shielding screen such that it stands out at 90° and cut it flush with the outer diameter of the shield disc 5;
- Press in the cable with the shield and sealing unit;
- Screw the adapter 1 as tight as possible;

M23 Power Connectors/Assembly Instructions

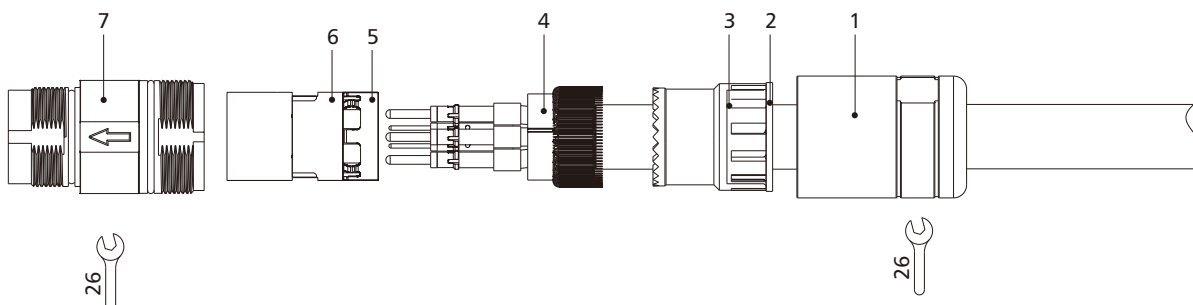
■ Straight Connector, Female Thread, Crimp type



Assembly instructions:

- Push the adapter 1 and the sealing element 3 with gasket 2 onto the cable;
- Strip the external sheath:30mm;
- Trim and remove the foil, wadding and inner insulation;
- Unbraid the braided screen and push it back;
- Strip the conductors insulation:9.0mm;
- Crimp the conductors to the contacts;
- Insert the contacts into contact carrier 6;
- Snap-fit earth spring 5 onto the contact carrier 6
- Open the spacer sleeve 4, fit it before the braided screen and clip them together;
- Guide the contact carrier 6 and the space sleeve 4 into the insert sleeve 7;
- Push up the braided screen and slide the sealing element 3 with the braided screen firmly against the space sleeve 4 until the teeth lock;
- Cut the shielding to length if necessary and twist the remaining shielding into the space provided 3;
- Screw the adapter 1 as tight as possible.

■ Straight Connector, Male Thread, Crimp type

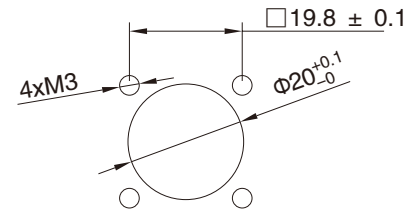
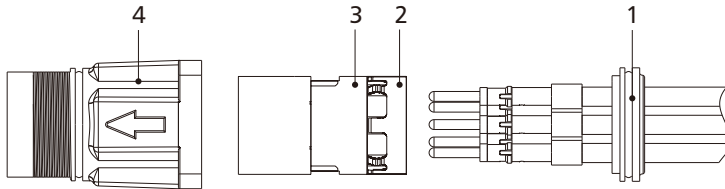


Assembly instructions:

- Push the adapter 1 and the sealing element 3 with gasket 2 onto the cable;
- Strip the external sheath:30mm;
- Trim and remove the foil, wadding and inner insulation;
- Unbraid the braided screen and push it back;
- Strip the conductors insulation:9.0mm;
- Crimp the conductors to the contacts;
- Insert the contacts into contact carrier 6;
- Snap-fit earth spring 5 onto the contact carrier 6
- Open the spacer sleeve 4, fit it before the braided screen and clip them together;
- Guide the contact carrier 6 and the space sleeve 4 into the insert sleeve 7;
- Push up the braided screen and slide the sealing element 3 with the braided screen firmly against the space sleeve 4 until the teeth lock;
- Cut the shielding to length if necessary and twist the remaining shielding into the space provided 3;
- Screw the adapter 1 as tight as possible.

M23 Power Panel Type Connectors/Assembly Instructions

■ Straight Connector, Male Thread, Crimp type

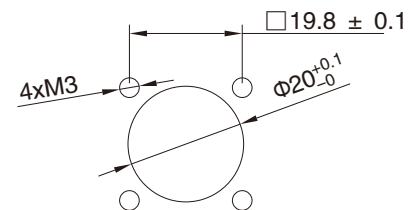
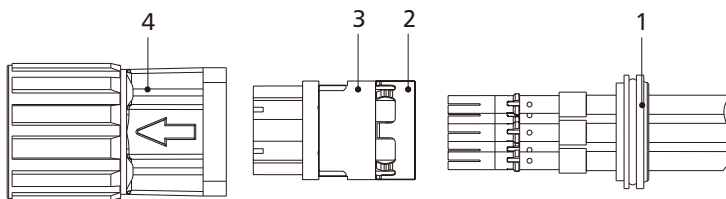


Installation dimensions

Assembly instructions:

- Strip the wires insulation: 9.0mm;
- Crimp the conductors to the contacts;
- Insert the contacts into contact carrier 3;
- Snap-fit earth spring 2 onto the contact carrier 3
- Guid the wires through the support ring 1;
- Guid the contact carrier 3 into the insert sleeve 4;
- Insert the support ring 1 in the sleeve 4;
- Fasten the assembled connectors to the mounting panel using screws(M3*0.5).

■ Straight Connector, Female Thread, Crimp type



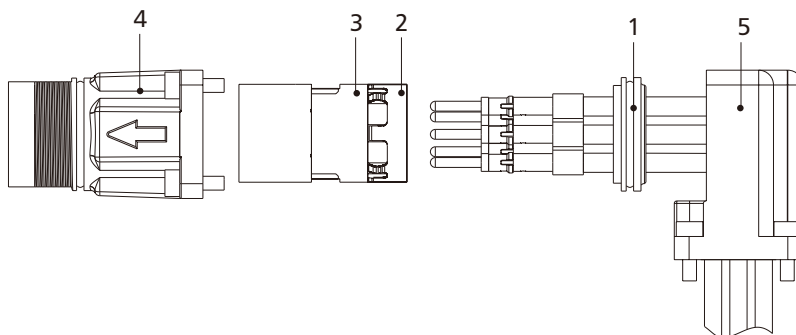
Installation dimensions

Assembly instructions:

- Strip the wires insulation: 9.0mm;
- Crimp the conductors to the contacts;
- Insert the contacts into contact carrier 3;
- Snap-fit earth spring 2 onto the contact carrier 3
- Guid the wires through the support ring 1;
- Guid the contact carrier 3 into the insert sleeve 4;
- Insert the support ring 1 in the sleeve 4;
- Fasten the assembled connectors to the mounting panel using screws(M3*0.5).

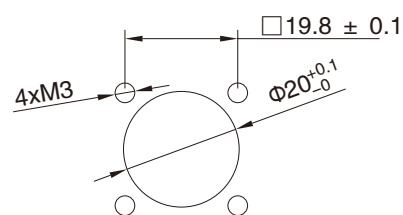
M23 Power Panel Type Connectors/Assembly Instructions

■ Angled Connector, Male Thread, Crimp type



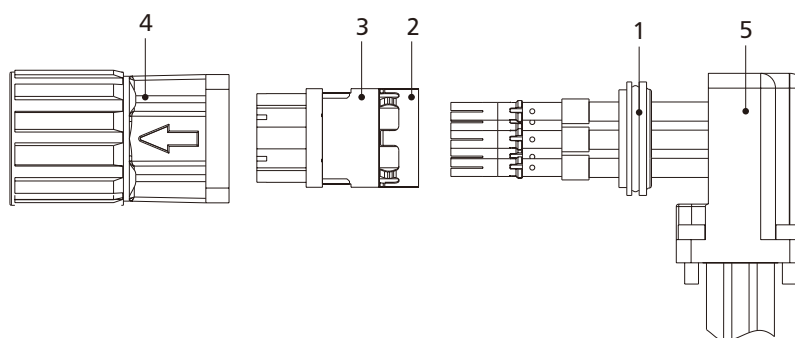
Assembly instructions:

- Strip the wires insulation:9.0mm;
- Crimp the conductors to the contacts and push them through the assembled angle housing 5 and support ring 1;
- Insert the contacts into contact carrier 3;
- Snap-fit earth spring 2 onto the contact carrier 3
- Guid the contact carrier 3 into the insert sleeve 4;
- Insert the support ring 1 in the sleeve 4;
- Fasten the assembled connectors to the angel housing 5 using screws(M3*0.5).



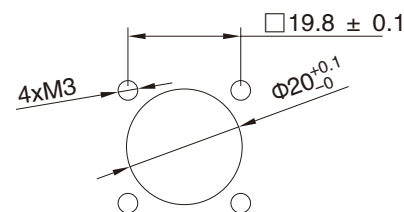
Installation dimensions

■ Angled Connector, Female Thread, Crimp type



Assembly instructions:

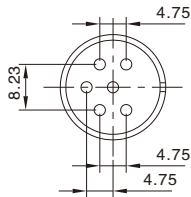
- Strip the wires insulation:9.0mm;
- Crimp the conductors to the contacts and push them through the assembled angle housing 5 and support ring 1;
- Insert the contacts into contact carrier 3;
- Snap-fit earth spring 2 onto the contact carrier 3
- Guid the contact carrier 3 into the insert sleeve 4;
- Insert the support ring 1 in the sleeve 4;
- Fasten the assembled connectors to the angel housing 5 using screws(M3*0.5).



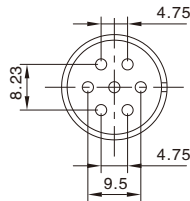
Installation dimensions

M23 PCB Layout & Panel Cut-out

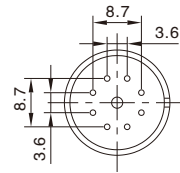
PCB Layout



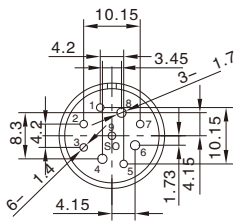
6P



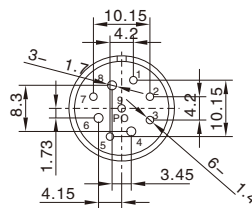
7P



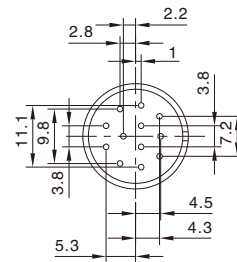
8+1P



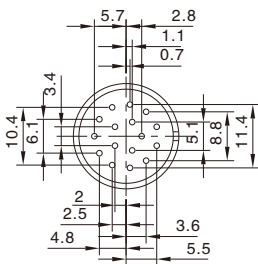
6+3P female



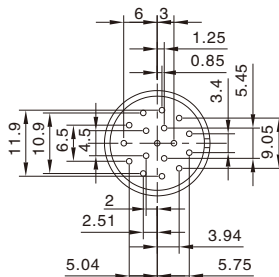
6+3P male



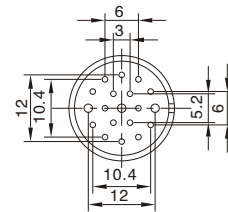
12P



16P

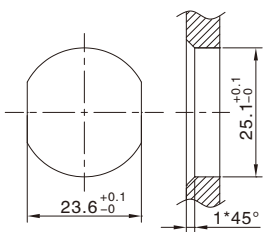


17P

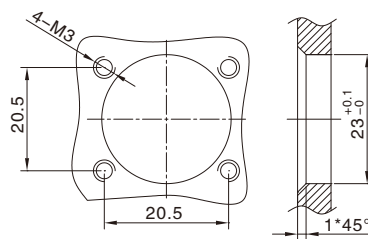


19P

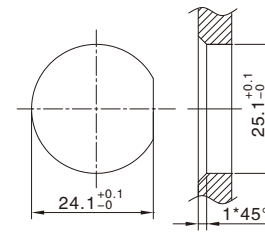
Panel Cut-out Dimensions



H-cutting



Flange-cutting



D-cutting